

2024 national curriculum tests

Key stage 1

Mathematics

Paper 2: reasoning

First name	
Middle name	
Last name	

Total marks	
-------------	--



Ajay



Amy



Ben



Kemi

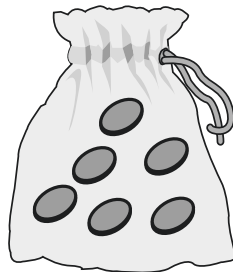
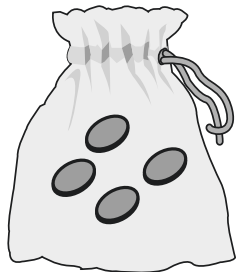
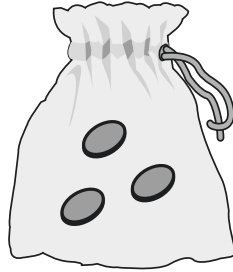
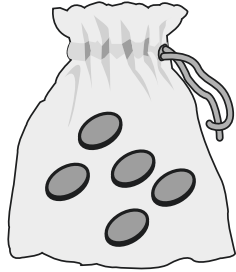


Sam



Sita

Practice question



1

38

--

tens



1 mark

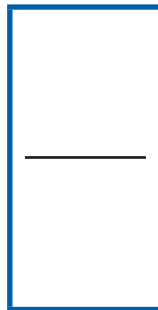
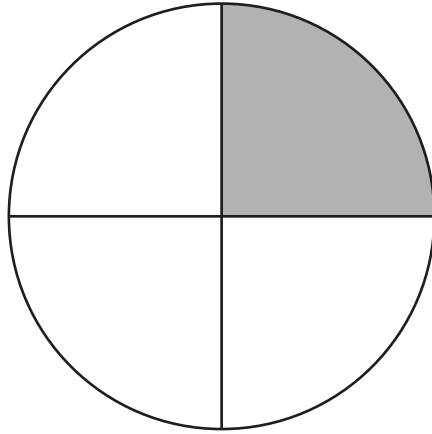
2

August						
Sun	Mon	Tues	Wed	Thurs	Fri	Sat
				1	2	3
4	5	6	7	8	9	10
11	12	13	14	15	16	17
18	19	20	21	22	23	24
25	26	27	28	29	30	31



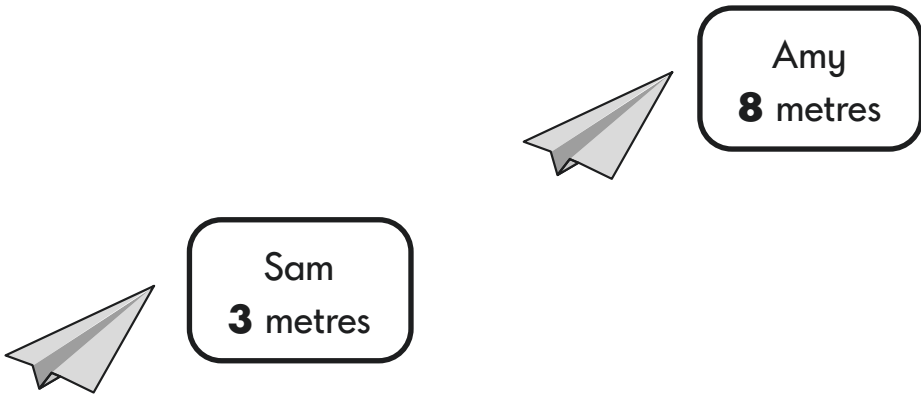
1 mark

3



1 mark

4



metres



1 mark

5

2

4

5

6

7

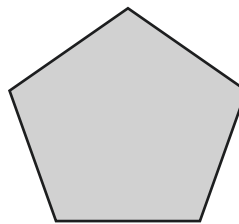
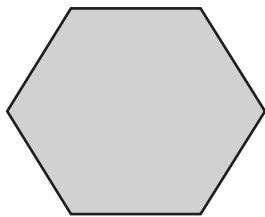
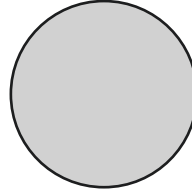
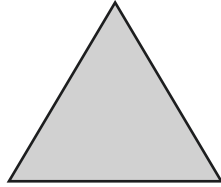


1 mark

6

Kemi draws around a face of a **cylinder**.

Tick the shape she has drawn.



1 mark

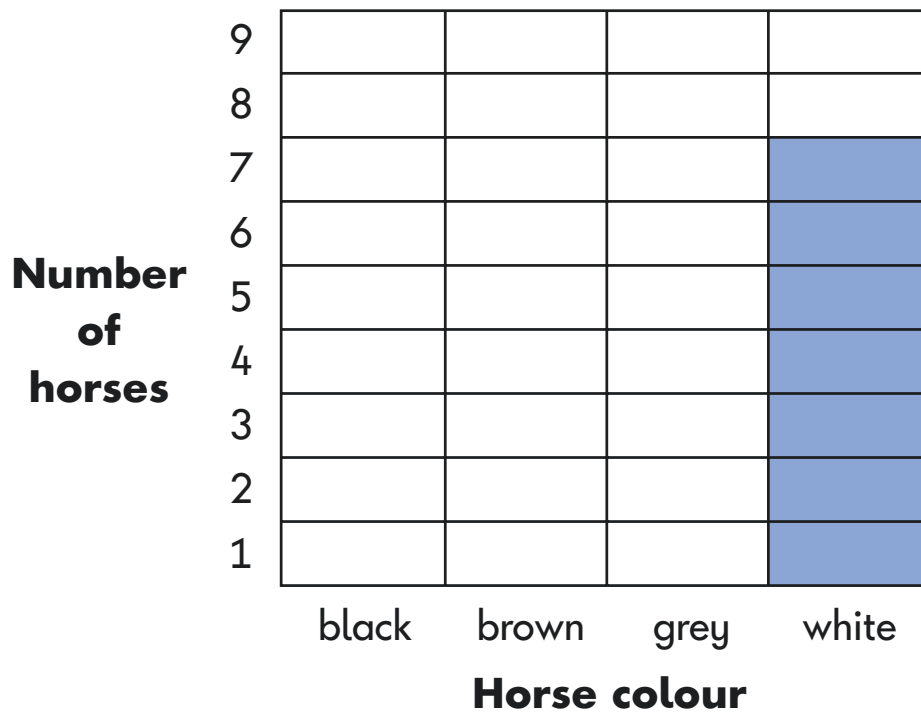
7

This table shows the different colours of horses on a farm.

Horse colour	Number of horses
black	2
brown	0
grey	4
white	7

Use the table to complete the graph below.

One is done for you.



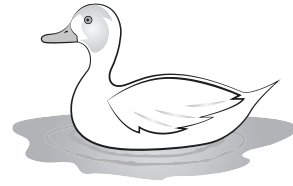
1 mark

8

There are **16** ducks on the pond.

5 ducks fly away.

How many ducks stay on the pond?



--

ducks



1 mark

9

Write the missing numbers in this pattern.

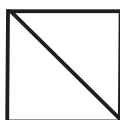
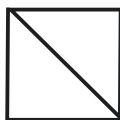
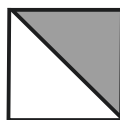
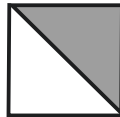
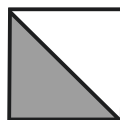
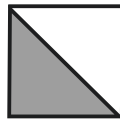
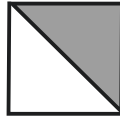
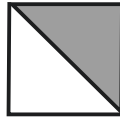
		71		73	74
--	--	----	--	----	----



1 mark

10 Here is a shape pattern.

Shade the **last two** boxes to complete the pattern.



1 mark

11

Sam has **90** marbles.

He gives **50** marbles to Ben.

How many marbles does Sam have left?

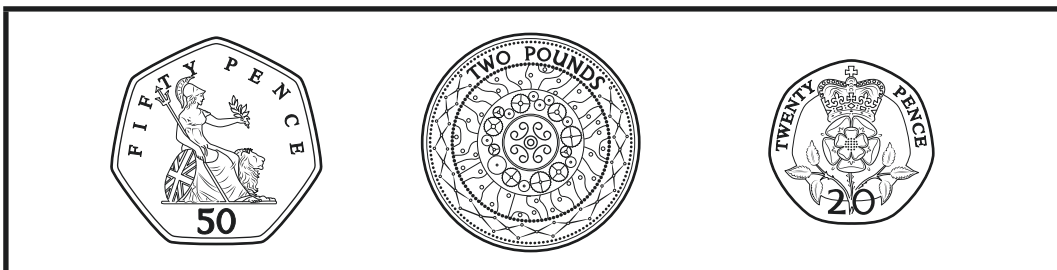
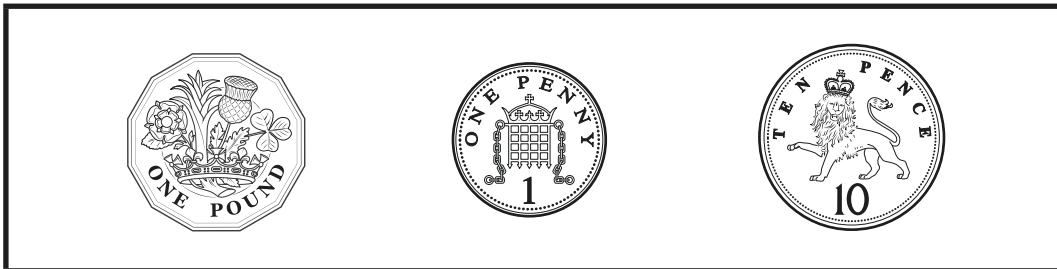
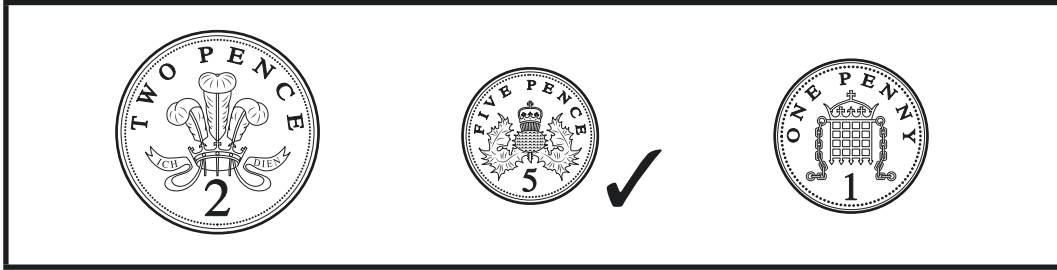


1 mark

12

In each box, tick the coin that has the **greatest value**.

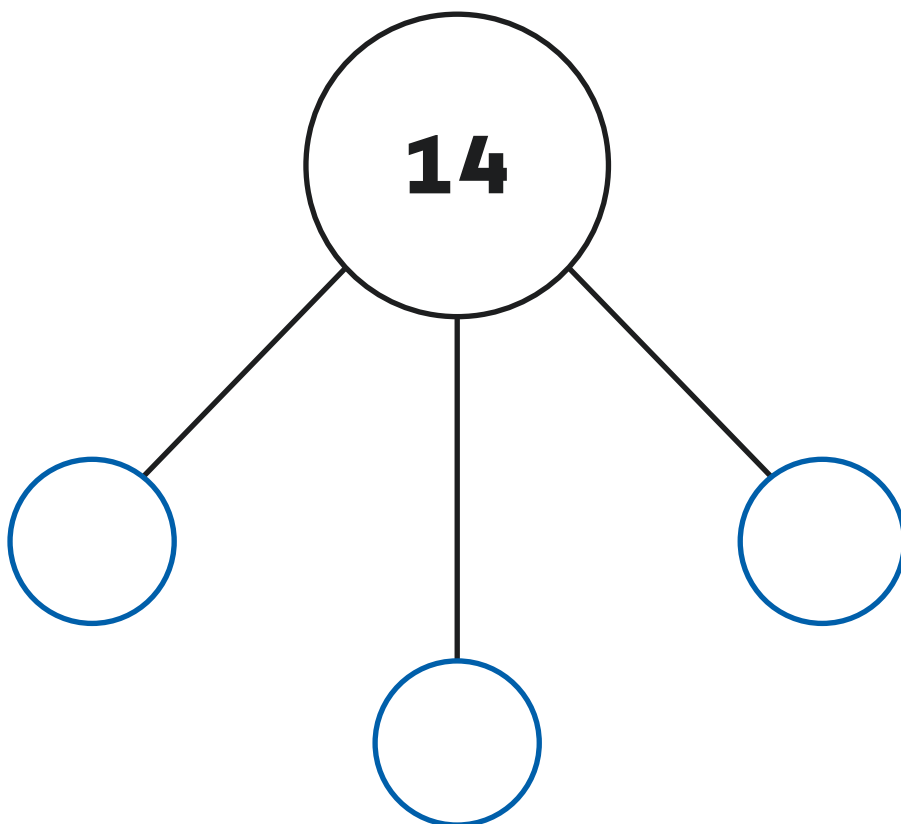
One is done for you.



○
1 mark

13

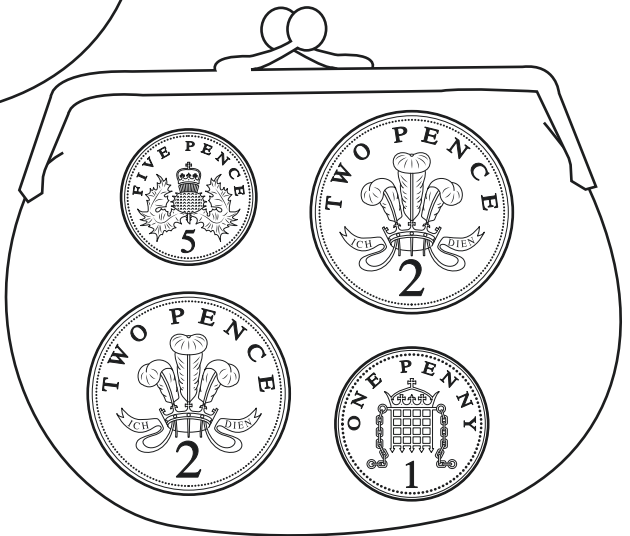
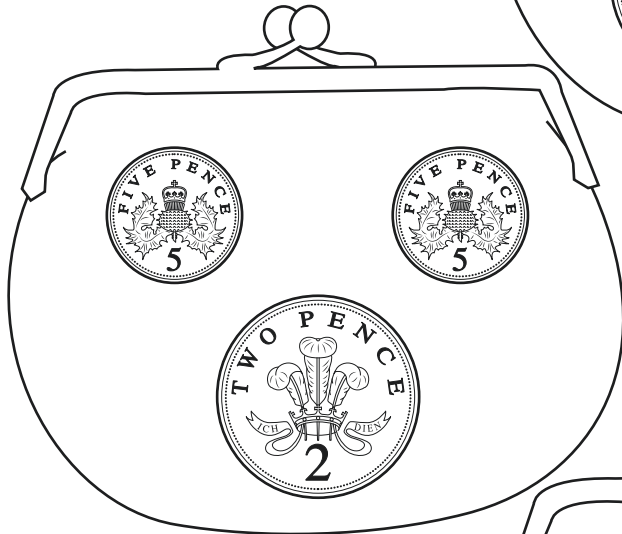
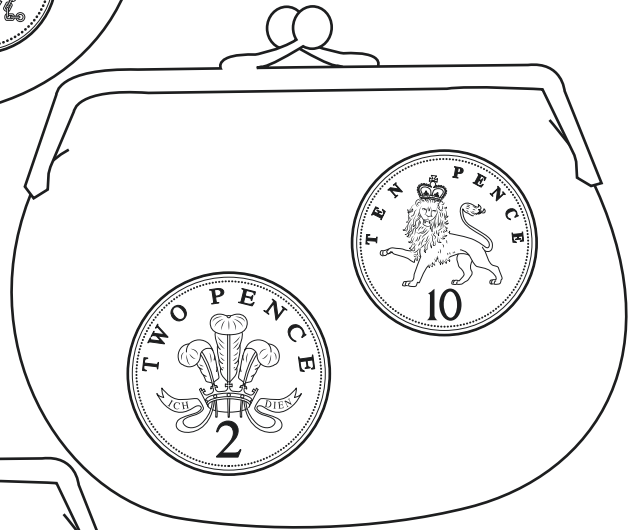
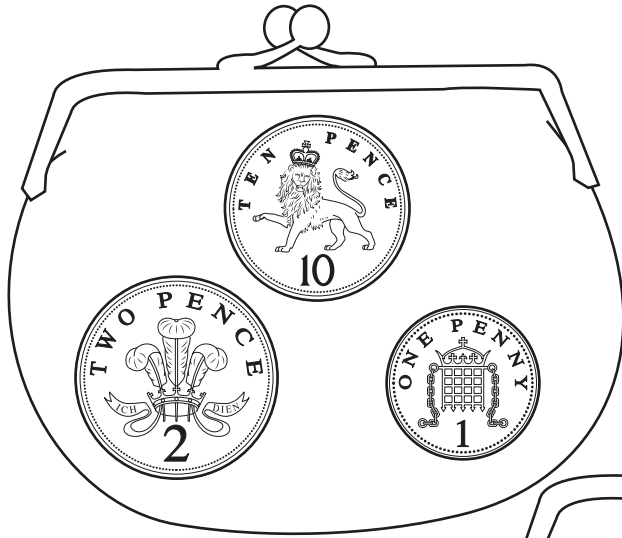
Write a number in each empty circle so that all three numbers total **14**



1 mark

14

Tick **two** purses with the **same** amount of money.

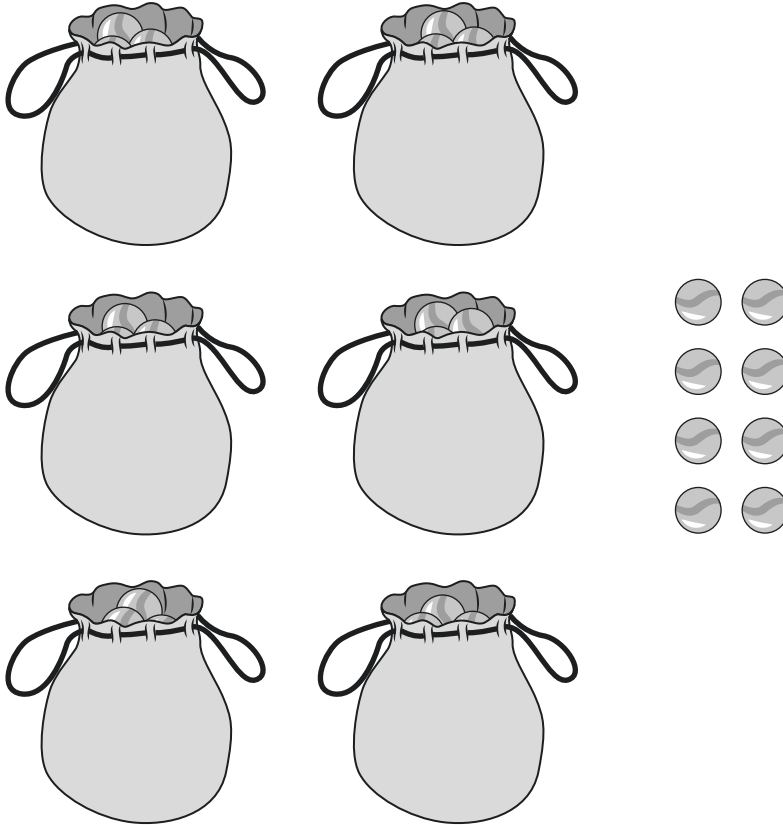


1 mark

15

Ajay has some marbles.

He puts **10** marbles into each bag. He has 8 left over.



How many marbles does Ajay have **altogether**?

marbles

1 mark

16 Complete the number sentence below.

$$5 \times \square = 5$$



1 mark

17 Ajay had **18** strawberries.

He picked some **more**.

Ajay now has **24** strawberries.

How many **more** strawberries did he pick?



strawberries



1 mark

18 One calculation does **not** equal 17

Cross it out.

$$9 + 8$$

$$8 + 9$$

$$20 - 3$$

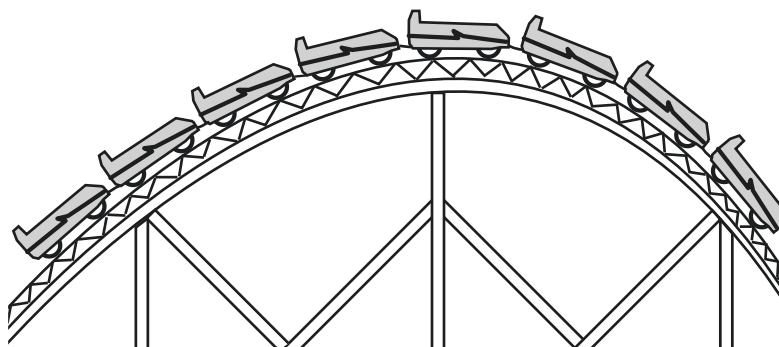
$$3 - 20$$



1 mark

19

A ride has **8** cars.



There are **5** seats in each car.

Complete the number sentence to show the **total** number of seats on the ride.

$$\square \times \square = \square \text{ seats}$$



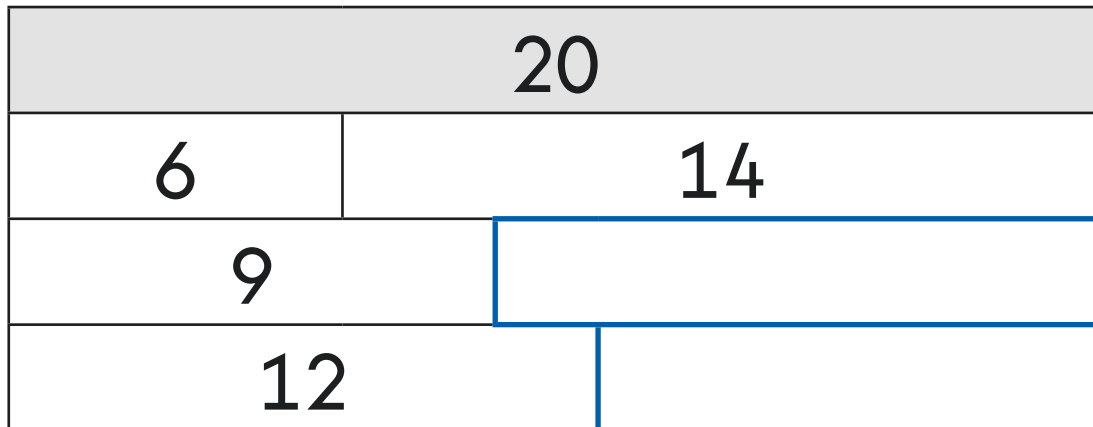
1 mark

20

The diagram below shows number bonds that make **20**

Write the missing numbers to complete the diagram.

One is done for you.



1 mark

21

This number pattern increases by **10** each time.

7 17 27 37

Circle **all** the numbers below that will be in the pattern.

57

66

75

97



1 mark

22

Stickers are sold in packs of **5**

Kemi has **30** stickers altogether.

How many packs does Kemi have?

packs



1 mark

23

Amy has **45p**.



A badge costs **10p**.

What is the **total** number of badges that Amy can buy with 45p?

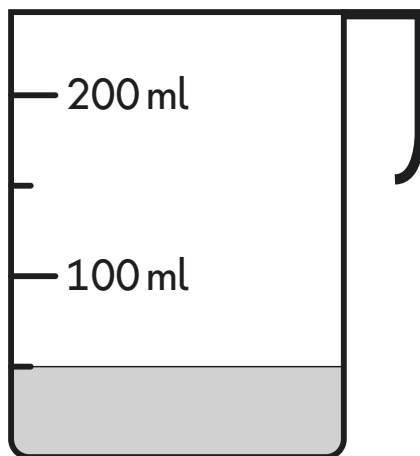
badges



1 mark

24

How much juice is in this measuring jug?



ml



1 mark

25

Tick **all** the calculations that total **100**

$$50 + 50$$

$$80 + 30$$

$$75 + 15$$

$$35 + 65$$

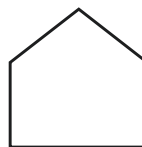
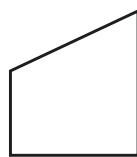


1 mark

26

Three of the shapes below have a line of symmetry.

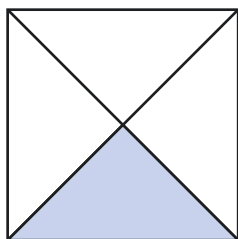
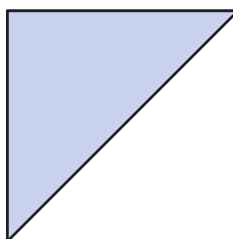
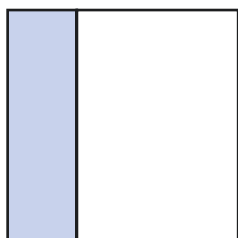
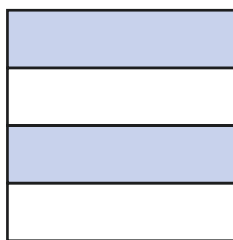
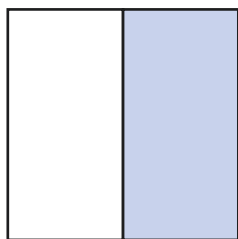
Tick the **three** shapes.



1 mark

27

Tick **all** the squares that have **half** shaded.



1 mark

28 Only **one** number sentence is correct.

Circle it.

$$\frac{1}{4} = \frac{1}{2}$$

$$\frac{2}{4} = \frac{1}{3}$$

$$\frac{3}{4} = \frac{1}{2}$$

$$\frac{2}{4} = \frac{1}{2}$$



1 mark

29 Complete the number sentence.

One is done for you.

$$\frac{1}{4} \text{ of } 8 = \boxed{2}$$

$$\frac{3}{4} \text{ of } 8 = \boxed{}$$



1 mark

30 Sita only puts **5p** coins in a bag.

There is a **total of £1** in the bag.

How many 5p coins are in the bag?



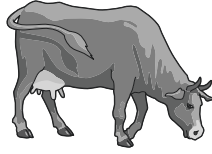
coins



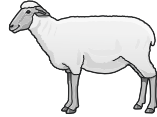
1 mark

31 There are **30** animals on a farm.

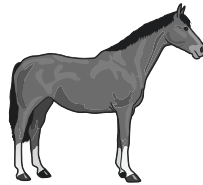
$\frac{1}{2}$ of the animals are cows.



9 are sheep.



The rest are horses.



How many of the animals are horses?

Show
your
working

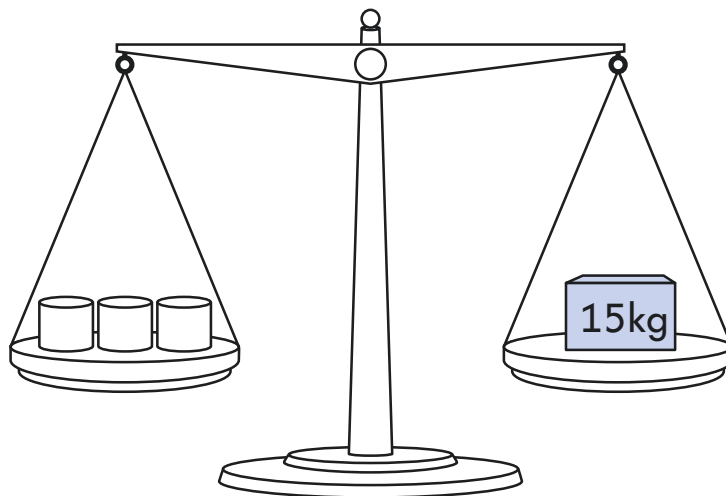
horses




2 marks

32

Here is a balance.



The mass of the  is 15 kg.

What is the mass of **one**  ?

kg

1 mark

33

Sita buys a drink that costs 65p.

She pays with **four** 20p coins.

How much **change** does Sita get?



Show
your
working

p


2 marks

End of test

[BLANK PAGE]

Please do not write on this page.



2024 key stage 1 mathematics

Paper 2: reasoning

Print version product code: STA/24/8808/p ISBN: 978-1-83507-004-8

Electronic PDF version product code: STA/24/8808/e ISBN: 978-1-83507-023-9

For more copies

Additional printed copies of this booklet are not available. It can be downloaded from <https://www.primaryassessmentgateway.education.gov.uk> during May 2024, or afterwards from <https://www.gov.uk/government/collections/national-curriculum-assessments-practice-materials>.

© Crown copyright 2024

Re-use of Crown copyright in test materials

With the exception of third-party copyright content, the 2024 key stage 1 test materials are Crown copyright. You may re-use them (not including logos) free of charge in any format or medium in accordance with the terms of the Open Government Licence v3.0 which can be found on the National Archives website and accessed via the following link: www.nationalarchives.gov.uk/doc/open-government-licence. When you use this information under the Open Government Licence v3.0, you should include the following attribution: 'Contains material developed by the Standards and Testing Agency for 2024 national curriculum assessments and licensed under Open Government Licence v3.0' and where possible provide a link to the licence.



Exception – third-party copyright content in test materials

Schools and other educational establishments, as defined in the Copyright Designs and Patents Act 1988 (CDPA), may re-use the test materials in their entirety for teaching purposes: <https://www.gov.uk/guidance/exceptions-to-copyright>. However, if not expressly permitted under the CDPA, you must obtain permission from the relevant copyright owners, listed in the '2024 key stage 1 tests copyright report', for re-use of any third-party copyright content which we have identified in the test materials. Alternatively, you should remove the unlicensed third-party copyright content and/or replace it with appropriately licensed material.

If you have any queries regarding these test materials, contact the national curriculum assessments helpline on 0300 303 3013 or email assessments@education.gov.uk.